



MP INTRALOGÍSTIC

MASTER IN PRODUCTIVITY



• CATALOGUE •



INDEX

ELECTRIC TRACTORS

Towing capacity	Model	Driver	Page
	S100 SANITIZER	Seated	3
	S100 MOP	Standing	4
500 Kg.	T500 EVO	Seated	5-6
1000 Kg.	T1000 AC	Seated	7-8
1500 Kg.	T1500D	Seated	9-10
2000 Kg.	T2000D	Seated	9-10
4000 Kg.	T4000D AC	Seated or standing	11-12
500 Kg.	SX500	Standing	13-14
500 Kg.	SX500 SUMMER	Standing	15-16
1500 Kg.	TX1000 AC	Standing	17-18
2000 Kg.	TX2000 AC	Standing	19-20

ELECTRIC PLATFORMS

Towing capacity	Model	Driver	Page
400 Kg.	P250L	Seated or standing	21-22
400 Kg.	P300L	Seated	23-24
400 Kg.	PX500	Standing	25
400 Kg.	P500	Seated or standing	26-27

SCOOTERS

Towing capacity	Model	Driver	Page
	S100	Standing	28
150 Kg.	S200	Standing	29

HOSPITAL

	Model	Driver	Page
	H300	Standing	30-31
	H351	Seated	32-33
	H360	Seated	32-33

APPENDIX

Accessories	34-36
Towing Hooks	37
Covers	38
Trolleys	39-42
Specials	43



ELECTRIC VEHICLE S100 SANITIZER

S100 SANITIZER

The electric vehicle S100 SANIFICATION MP INTRALOGISTIC, is a vehicle suitable for cleaning and sanitizing floors in the workplace, in common areas, such as schools, public offices, etc.

The vehicle guarantees a sanitization of the pavement up to 4,000 to 7,000 sq m / h, with a vehicle charge range of 20/22 km.

STANDARD EQUIPMENT:

- Front electrically operated MOP, width 800/1200 mm.
- Rear disinfection unit, equipped with 5 adjustable spray nozzles
- Professional lance with spiral tube, with adjustable nozzle
- Driver on board seated
- Selectable speed Hare / Turtle (max 3,5 / 8 km / h.)
- Front metal casing, standard blue color
- Superelastic, anti-puncture, non-marking front wheel
- Super-elastic, anti-puncture, non-marking rear wheels
- Dashboard with battery charge status LED and hour meter, command reverse gear, horn, intermittent buzzer
- reverse gear, emergency mushroom button
- Electronic control with energy recovery
- Service braking when the run command is released
- Lever emergency braking on the left grip
- Automatic parking braking when the pedal sensor is released
- Pedal dead man sensor
- Rear-wheel Drive
- Internal 24V automatic battery charger



S100 SANITIZER

COD.010.001.0007

ELECTRIC MOTOR:

2 x 300 W.

SPEED Hare/Turtle

8 / 3,5 km /h.

SURMOUNTABLE SLOPE

HARE 8%

BATTERY

COD. 050.002.0016

n.2 12v - 75Ah hermetic, maintenance free batteries • Dimensions 259 x 168 x 208 (h) mm - Range 22/29 km. *

* Hypothetical data considering an average consumption with the vehicle in perfect condition, on a flat course and without obstacles

ACCESSORIES

COD.020.002.0033

Special reclining tow hook for towing cleaning trolleys

COD.030.010.0035

TTS / Filmop trolley hook connection (to be used with Towing hook COD.020.002.0033)

COD. 020.020.0001

Kit no. 2 LED lights

COD. 020.008.0008

Kit n. 2 flashing orange LEDs

COD. 020.003.0006

Steel lectern



VEICOLO ELETTRICO

S100 MOP

S100 MOP

The S100 MOP MP INTRALOGISTIC electric vehicle is a vehicle suitable for cleaning floors in workplaces, common areas, such as schools, public offices, etc.

The vehicle guarantees a cleaning of the flooring up to 7,000 sqm / h, with a vehicle charge range of 25/27 km.

EQUIPAGGIAMENTO DI SERIE:

- Front electrically operated MOP, width 800/1200 mm.
- Driver standing
- Selectable speed Hare / Turtle (max 3,5 / 8 km / h.)
- Front metal casing, standard blue color
- Superelastic, anti-puncture, non-marking front wheel
- Super-elastic, anti-puncture, non-marking rear wheels
- Dashboard with battery charge status LED and hour meter, command reverse gear, horn, intermittent buzzer
- reverse gear, emergency mushroom button
- Electronic control with energy recovery
- Service braking when the run command is released
- Lever emergency braking on the left grip
- Automatic parking braking when the pedal sensor is released
- Pedal dead man sensor
- Rear-wheel Drive
- Internal 24V automatic battery charger



OPTIONAL SEAT

S100 MOP

COD.010.001.0007

ELECTRIC MOTOR :	2 x 300 W.	SPEED Hare/Turtle	8 / 3,5 km /h.
SURMOUNTABLE SLOPE	HARE 8%		

BATTERIA

COD. 050.002.0016

n.2 12v - 75Ah hermetic, maintenance free batteries • Dimensions 259 x 168 x 208 (h) mm - Range 22/29 km. *

* Hypothetical data considering an average consumption with the vehicle in perfect condition, on a flat course and without obstacles

ACCESSORI

COD.020.002.0033	Special reclining tow hook for towing cleaning trolleys
COD.030.010.0035	TTS / Filmop trolley hook connection (to be used with Towing hook COD.020.002.0033)
COD. 020.020.0001	Kit no. 2 LED lights
COD. 020.008.0008	Kit n. 2 flashing orange LEDs
COD. 020.003.0006	Steel lectern
COD. 020.004.0003	Sedile modello E
COD. 020.004.0005	Sedile modello EVO



ELECTRIC TRACTOR T500 EVO

■ ELECTRIC TRACTOR T500 EVO:

T500 EVO MP INTRALOGISTIC is eminently solid el. tractor, projected and carried out for the effective and safe transport of one person and a medium towing (500 Kg): which assures the user an increase in productivity and efficiency

■ STANDARD EQUIPMENT:

- Driver seated on board
- Metallic front cover, standard blue color
- Front and rear wheels, superelastic, no-tracking and puncture-proof type
- Panel board complete with battery charge indicator display, forward and backward speed push button, electric horn, backward warning buzzer, emergency push button, light switch.
- Electronic control unit
- Service brake by releasing the manipulator
- Emergency brake by acting the handlever on the left manipulator
- Parking brake by releasing the driver detection sensor
- Driver detection sensor
- Transaxle differential gear
- Rear traction
- Towing hook



T500 EVO

COD. 010.003.0010

REDUCTION GEAR

SPEED

GRADIENT

1:16

8 Km/h

8% (Std)

1:22 (option)

6 Km/h



ELECTRIC MOTOR:

800W

TOWING CAPACITY:

500 Kg



ELECTRIC TRACTOR T500 EVO

"TRACTION" BATTERY

COD. 050.002.0033

- No. 1 Traction lead/acid battery 24v - 120Ah
- Dimensions: 580 x 210 x 370(h) mm
- Working charge: 39 Km*
- With automatic refilling system

COD. 050.003.0003

- External automatic battery charger 24V - 25Ah

COD. 050.003.0006

- In-built automatic battery charger 24V - 14Ah

"GEL" BATTERY

COD. 050.002.0002

- No. 4 Traction "GEL" batteries 6V - 180Ah
- Dimensions: 244x190x276(h) mm.
- Working charge: 59 Km*

COD. 050.003.0007

- External automatic battery charger 24V - 25Ah HF

COD. 050.003.0015

- In-built automatic battery charger 24V - 25Ah HF

"SUPER TRACTION" BATTERY

COD. 050.002.0034

- No. 1 Traction lead/acid battery 24V-200Ah
- Dimensions: 520x420x315(h) mm.
- Working charge: 65 km*
- With automatic refilling system

COD. 050.003.0009

- External automatic battery charger 24V - 40Ah

* Hypotetical data considering an average consumption with the machine in perfect conditions. on a flat surface and without obstacles.

ACCESSORIES

COD. 020.008.0008

- n. 2 orange LED flashing lights lit

COD. 020.020.0001

- n. 2 LED headlights set

COD. 020.003.0005

- Book holder

COD. 030.010.0030

- Multi-hook support

COD. 020.002.0027

- Towing hook (additional)

ACCESSORIES PAG. 32

HOOKS PAG. 35

TROLLEYS PAG. 37



ELECTRIC TRACTOR T1000 AC

■ ELECTRIC TRACTOR T1000 AC:

T1000 AC MP INTRALOGISTIC is eminently solid el. tractor, projected and carried out for the effective and safe transport of one person and a medium towing (1000 Kg): which assures the user an increase in productivity and efficiency

■ STANDARD EQUIPMENT:

- Driver seated on board
- Metallic front cover, standard blue color
- Front and rear wheels, superelastic, no-tracking and puncture-proof type
- Panel board complete with battery charge indicator display, forward and backward speed push button, electric horn, backward warning buzzer, emergency push button, light switch.
- Electronic control unit
- Service brake by releasing the manipulator
- Emergency brake by acting the handlever on the left manipulator
- Parking brake by releasing the driver detection sensor
- Driver detection sensor
- Transaxle differential gear
- Rear traction
- Towing hook



T1000

COD. 010.003.0015

REDUCTION GEAR

1:22

SPEED

6-12 Km/h

GRADIENT

12% (Std)

ELECTRIC MOTOR:

1.200W

TOWING CAPACITY:

1.000 Kg



ELECTRIC TRACTOR T1000 AC

"TRACTION" BATTERY

COD. 050.002.0033

- No. 1 Traction lead/acid battery 24v - 120Ah
- Dimensions: 580 x 210 x 370(h) mm
- Working charge: 39 Km*
- With automatic refilling system

COD. 050.003.0003

- External automatic battery charger 24V - 25Ah

COD. 050.003.0006

- In-built automatic battery charger 24V - 14Ah

"GEL" BATTERY

COD. 050.002.0002

- No. 4 Traction "GEL" batteries 6V - 180Ah
- Dimensions: 244x190x276(h) mm.
- Working charge: 59 Km*

COD. 050.003.0007

- External automatic battery charger 24V - 25Ah

COD. 050.003.0015

- In-built automatic battery charger 24V - 25Ah

"SUPER GEL" BATTERY

COD. 050.002.0046

- No. 4 Traction "GEL" batteries 6V - 260Ah
- Dimensions: 530x370x285(h) mm.
- Working charge: 37 Km*

COD. 050.003.0040

- External automatic battery charger 24V - 30Ah HF

COD. 050.003.0039

- In-built automatic battery charger 24V - 30Ah HF

"SUPER TRACTION" BATTERY

COD. 050.002.0034

- No. 1 Traction lead/acid battery 24V-200Ah
- Dimensions: 520x420x315(h) mm.
- Working charge: 65 km*
- With automatic refilling system

COD. 050.003.0009

- External automatic battery charger 24V - 40Ah

* Hypotetical data considering an average consumption with the machine in perfect conditions. on a flat surface and without obstacles.

ACCESSORIES

COD. 020.008.0008

- n. 2 orange LED flashing lights lit

COD. 020.020.0001

- n. 2 LED headlights set

COD. 020.003.0005

- Book holder

COD. 030.010.0030

- Multi-hook support

COD. 020.002.0027

- Towing hook (additional)

ACCESSORIES PAG. 32

HOOKS PAG. 35

TROLLEYS PAG. 37



ELECTRIC TRACTORS T1500D - T2000D

■ ELECTRIC TRACTORS T1500D and T2000D:

MP INTRALOGISTIC Series **T1500D** and **T2000D** have been projected to be an indefatigable tow tractors for goods on trailers. Fast and safe on wide spaces, they have towing capacity of 1500 Kgs and 2000 Kgs. They represent for the user the best solution for goods tow transports over 36 m distances.

■ STANDARD EQUIPMENT:

- Driver seated on board
- Metallic front cover, standard blue color
- Front driving gear wheel with superelastic, no-tracking and puncture-proof rubber
- Rear wheels, superelastic, no-tracking and puncture-proof type
- Panel board complete with battery charge indicator display, forward and backward speed push button, electric horn, backward warning buzzer, emergency push button, light switch
- Electronic control unit
- Transaxle gear system
- Service brake by releasing the manipulator
- Emergency brake by acting the hand-lever on the left manipulator
- Parking brake by releasing the driver detection sensor
- Driver detection sensor
- Frame clearance: 100 mm
- Towing hook
- Transaxle system



T1500D

COD. 010.018.0013

REDUCTION GEAR	SPEED	GRADIENT
1:16 (option)	7 Km/h	
1:22	6 Km/h	12% (Std)
ELECTRIC MOTOR:		1200W
TOWING CAPACITY:		1500 Kg



T2000D

COD. 010.018.0012

REDUCTION GEAR	SPEED	GRADIENT
1:16 (option)	6 Km/h	
1:22	4,5 Km/h	12% (Std)
ELECTRIC MOTOR:		1.500W
TOWING CAPACITY:		2.000 Kg





ELECTRIC TRACTORS

T1500D - T2000D

"TRACTION" BATTERY

COD. 050.002.0033

- No. 1 Traction lead/acid battery 24V – 120Ah
- Dimensions: 580 x 210 x H370 mm
- Working charge T1500D: 17 Km
- Working charge T2000D: 11 Km
- With automatic refilling system

COD. 050.003.0003

- External automatic battery charger 24V - 25Ah

COD. 050.003.0006

- In-built automatic battery charger 24V - 14Ah HF

QUICK BATTERY CHANGE

COD. 010.018.0017

- T1500 with side opening battery comp. and sliding support

COD. 010.018.0016

- T2000 with side opening battery comp. and sliding support

COD. 020.012.0002

- Loading table for replacing battery

"GEL" BATTERY

COD. 050.002.0002

- No. 4 Traction "GEL" batteries 6V – 180Ah
- Dimensions: 244x190xH276 mm
- Working charge T1500D: 25 Km/h
- Working charge T2000D: 17 Km/h

COD. 050.003.0007

- External automatic battery charger 24V - 25Ah HF

COD. 050.003.0015

- In-built automatic battery charger 24V - 25Ah HF

"SUPER TRACTION" BATTERY

COD. 050.002.0034

- No. 1 Traction lead/acid battery 24V – 200Ah
- Dimensions: 520x420xH315 mm
- Working charge T1500D: 28 km
- Working charge T2000D: 19 km
- With automatic refilling system

COD. 050.003.0009

- External automatic battery charger 24V - 40Ah

* Hypotetical data considering an average consumption with the machine in perfect conditions. on a flat surface and without obstacles.

ACCESSORIES

COD. 020.005.0005

- Front wheel guard

COD. 020.008.0006

- Straight telescopic pole for flashing light

COD. 020.003.0002

- Book holder

COD. 040.020.0006

- Front wheel suspension

COD. 020.020.0002

- N. 2 LED headlights set

COD. 020.014.0006

- Weather protection cover

ACCESSORIES PAG. 32

HOOKS PAG. 35

TROLLEYS PAG. 37



ELECTRIC TRACTOR T4000D AC

■ ELECTRIC TRACTOR T4000D AC:

MP INTRALOGISTIC T4000D AC has been designed and made to be used in indoor/outdoor long runs, as indefatigable tow tractor for goods on trailers. Fast and safe on wide spaces, it has a towing capacity of 4000 Kgs. It represents for the user the best solution for goods tow transports over 36 m distances

■ STANDARD EQUIPMENT:

- Driver seated or standing on board
- Steel front cover, No. 2 front lights, standard yellow (blue) color
- Front driving gear wheel with superelastic, no-tracking and puncture-proof rubber
- Rear wheels, superelastic, no-tracking and puncture-proof type
- Panel board complete with battery charge indicator display, forward and backward speed push button, electric horn, backward warning buzzer, emergency push button, light switch and technical warning with failures/anomalies display
- Electronic control unit
- Service brake by releasing the forward/backward control
- Emergency brake by acting the hand-lever on the left manipulator
- Parking brake by releasing the driver detection sensor
- Driver detection sensor
- Rear traction
- Transaxle gear system
- Frame clearance: 150 mm
- Multiposition towing hook



T4000D

COD. 010.022.0005

REDUCTION GEAR

SPEED

GRADIENT

1:34

6 - 15 Km/h *

10% (Std)

ELECTRIC MOTOR:

3000W AC

TOWING CAPACITY:

4000 Kg



* speed is adjustable and can be set before delivery



ELECTRIC TRACTOR T4000D AC

BATTERY

COD. 050.002.0029

- No. 1 Traction lead/acid battery 24v - 400Ah
- Dimensions: 807 x 340 x 480(h) mm.
- Working charge: 55 Km at 9 km/h speed*
- With automatic refilling system

COD. 050.003.0031

- External automatic battery charger 24V - 70Ah

* Hypotetical data considering an average consumption with the machine in perfect conditions. on a flat surface and without obstacles.

DRIVER STANDING KIT

- Driver standing kit: lumbar backrest, raised driving column, driver detection sensor on pedal

ACCESSORIES

COD. 020.003.0002

- Book holder

COD. 020.008.0006

- Straight telescopic pole for flashing light

COD. 020.014.0008

- Weather protection cover

ACCESSORIES PAG. 32

HOOKS PAG. 35

TROLLEYS PAG. 37



ELECTRIC TRACTOR SX500 AC

■ TRATTORE SX500 AC:

MP INTRALOGISTIC tractor **SX500** is a real electric tractor studied to let the operators to move along industrial surfaces effortless, fast and safe. Conceived for the transport of one person and a trolley train (max 500 kg.) in a safe way. It operates also with radio remote control.

■ STANDARD EQUIPMENT:

- Driver standing on board
- Metallic front cover, standard blue color
- Nr. 1 x Front wheel, puncture-proof, no-marking, superelastic type
- Nr. 2 x Rear wheels, puncture-proof, no-marking, superelastic type
- Panel board complete with: charge indicator display and timer, forward and backward speed switch, electric horn, backward warning buzzer, emergency push button
- Electronic control unit, energy saving
- Service brake by releasing the manipulator
- Emergency brake by acting the lever on the left side of the steering handle
- Automatic parking brake by releasing the detection sensor
- Driver detection sensor
- Transaxle differential gear
- Built-in battery charger 24V
- Cushioned front fork



REDUCTION GEAR	SPEED	GRADIENT
1:16 (option)	15 Km/h	
1:22	12,5 Km/h	14% (Std)
1:32 (option)	9 Km/h	

SX500

COD. 010.027.0001

COD. 010.027.0010

WITH OUTFIT PROTECTION

ELECTRIC MOTOR:

1200W AC

ELECTRIC MOTOR:

500 Kg.*

ELECTRIC MOTOR:

1200W AC

TOWING CAPACITY:

500 Kg.*

* With towing hook



ELECTRIC TRACTOR SX500 AC

STANDARD BATTERY

COD. 050.002.0040

- n.2 Hermetic sealed batteries 12v - 100Ah, maintenance free
- Dimensions mm 308 x 172 x 212(h)
- Working charge: 35 Km*

PURE LEAD BATTERY

COD. 050.002.0044

- n.2 Pure lead batteries 12v - 90 Ah **
- Dimensions: 302 x 175 x 227(h) mm.
- Maintenance free
- Working charge: 30 km*

COD. 050.003.0035

- External automatic battery charger 24V - 1 Kw HF **

COD. 050.020.0009

- Battery discharge alarm **

* Hypotetical data considering an average consumption with the machine in perfect conditions. on a flat surface and without obstacles.

** together with the pure lead battery they have to be purchased also the charger and the alarm.

ACCESSORIES

COD. 020.020.0003

- Remote control kit for walking operator (only with 1:32 reduction) *

COD. 020.020.0001

- n. 2 LED headlights set

COD. 020.008.0008

- n. 2 orange LED flashing lights lit *

COD. 020.002.0025

- Front hook for "shopping carts" (only with 1:32 reduction)

COD. 020.002.0026

- Rear hook for "shopping carts" (only with 1:32 reduction)

COD. 020.004.0005

- Seat "EVO"

COD. 020.010.0010

- Backrest (for standing driver)

COD. 020.010.0011

- "U" Shape tubular backrest whit reinforced wheels guard

COD. 020.003.0005

- Book holder

COD. 020.002.0027

- Standard towing hook

ACCESSORIES PAG. 32

HOOKS PAG. 37

TROLLEYS PAG. 37

* In abbinamento al Kit Radiocomando deve essere acquistato obbligatoriamente anche il Kit lampeggianti LED arancioni



ELECTRIC TRACTOR SX500 SUMMER

■ TRATTORE SX500 SUMMER:

SX500 SUMMER MP INTRALOGISTIC is a real electric tractor for towing, especially for outdoor use. For those working in tourist villages, campings, golf course, boat storages or uneven terrains, SX 500 SUMMER can be used on any rough surface for towing trailers. (max 500 kg)

■ STANDARD EQUIPMENT:

- Driver standing on board
- Metallic front cover, standard blue color
- Pneumatic wheels
- Panel board complete with: charge indicator display and timer, forward and backward speed switch, electric horn, backward warning buzzer, emergency push button
- Electronic control unit, energy saving
- Service brake by releasing the manipulator
- Emergency brake by acting the lever on the left side of the steering handle
- Automatic parking brake by releasing the detection sensor
- Driver detection sensor
- Transaxle differential gear
- Built-in battery charger 24V
- Cushioned front fork



REDUCTION GEAR	SPEED	GRADIENT
1:22	8-13 Km/h	10% (Std)

SX500

COD. 010.027.0011

ELECTRIC MOTOR:

1200W AC

ELECTRIC MOTOR:

500 Kg.*

* With towing hook



ELECTRIC TRACTOR SX500 SUMMER

STANDARD BATTERY

COD. 050.002.0040

- n.2 Hermetic sealed batteries 12v - 100Ah, maintenance free
- Dimensions mm 308 x 172 x 212(h)
- Working charge: 35 Km*

PURE LEAD BATTERY

COD. 050.002.0044

- n.2 Pure lead batteries 12v - 90 Ah **
- Dimensions: 302 x 175 x 227(h) mm.
- Maintenance free
- Working charge: 30 km*

COD. 050.003.0035

- External automatic battery charger 24V - 1 Kw HF **

COD. 050.020.0009

- Battery discharge alarm **

* Hypotetical data considering an average consumption with the machine in perfect conditions. on a flat surface and without obstacles.

** together with the pure lead battery they have to be purchased also the charger and the alarm.

ACCESSORI

COD. 020.020.0001

- n. 2 LED headlights set

COD. 020.008.0008

- n. 2 orange LED flashing lights lit *

COD. 020.004.0005

- Seat "EVO"

COD. 020.010.0010

- Backrest (for standing driver)

COD. 020.010.0011

- "U" Shape tubular backrest whit reinforced wheels guard

COD. 020.003.0005

- Book holder

COD. 020.002.0027

- Standard towing hook

ACCESSORIES PAG. 32

HOOKS PAG. 35

TROLLEYS PAG. 37



ELECTRIC TRACTOR TX1000 AC

■ ELECTRIC TRACTOR TX1000 AC:

MP INTRALOGISTIC Series **TX 1000 AC** is proposed to the market for a towing capacity up to 1500 Kgs. Compact and solid for heavy uses in large industrial spaces. Fast, safe and fully ergonomic type, able to assure to the user an increase in productivity and efficiency

■ STANDARD EQUIPMENT:

- Driver standing on board
- Metallic front cover, standard blue color
- Front driving gear wheel with Vulkolan rubber wheel
- Rear wheels, Ø 200 mm superelastic and puncture-proof type
- Panel board complete with battery charge indicator display, forward and backward, speed throttle, electric horn, backward warning buzzer, emergency push button, light switch (option)
- Electronic control unit 240Ah AC
- Service brake by releasing the throttle
- Emergency brake by acting the emergency push throttle
- Parking brake by releasing the driver detection sensor
- Driver detection sensor
- Front traction driving gear
- Towing hook



Handlebar

COD. 010.025.0010

REDUCTION GEAR

SPEED

GRADIENT

1:16

7 Km/h *

10% (Std)

ELECTRIC MOTOR:

1800W AC

TOWING CAPACITY:

1500 Kg

* speed is adjustable (± 1 km/h) and can be set before delivery

Helm steering

COD. 010.025.009

REDUCTION GEAR

SPEED

GRADIENT

1:16

7 Km/h *

10% (Std)

ELECTRIC MOTOR:

1800W AC

TOWING CAPACITY:

1500 Kg

* speed is adjustable (± 1 km/h) and can be set before delivery



ELECTRIC TRACTOR TX1000 AC

BATTERY

COD. 050.002.0035

- No. 1 Traction lead/acid battery 24v - 230 Ah
- Dimensions: 580 x 210 x 580(h) mm.
- With automatic refilling system
- Working charge: 38 km*

COD. 050.003.0009

- External automatic battery charger 24V - 40Ah

* Hypotetical data considering an average consumption with the machine in perfect conditions. on a flat surface and without obstacles.

ACCESSORIES

COD. 020.020.0001

- n. 2 LED headlights set **Only for "handlebar" version**

COD. 020.003.0007

- Book holder **Only for "handlebar" version**

COD. 020.008.0009

- Orange LED flashing light on backrest

ACCESSORIES PAG. 32

HOOKS PAG. 35

TROLLEYS PAG. 37



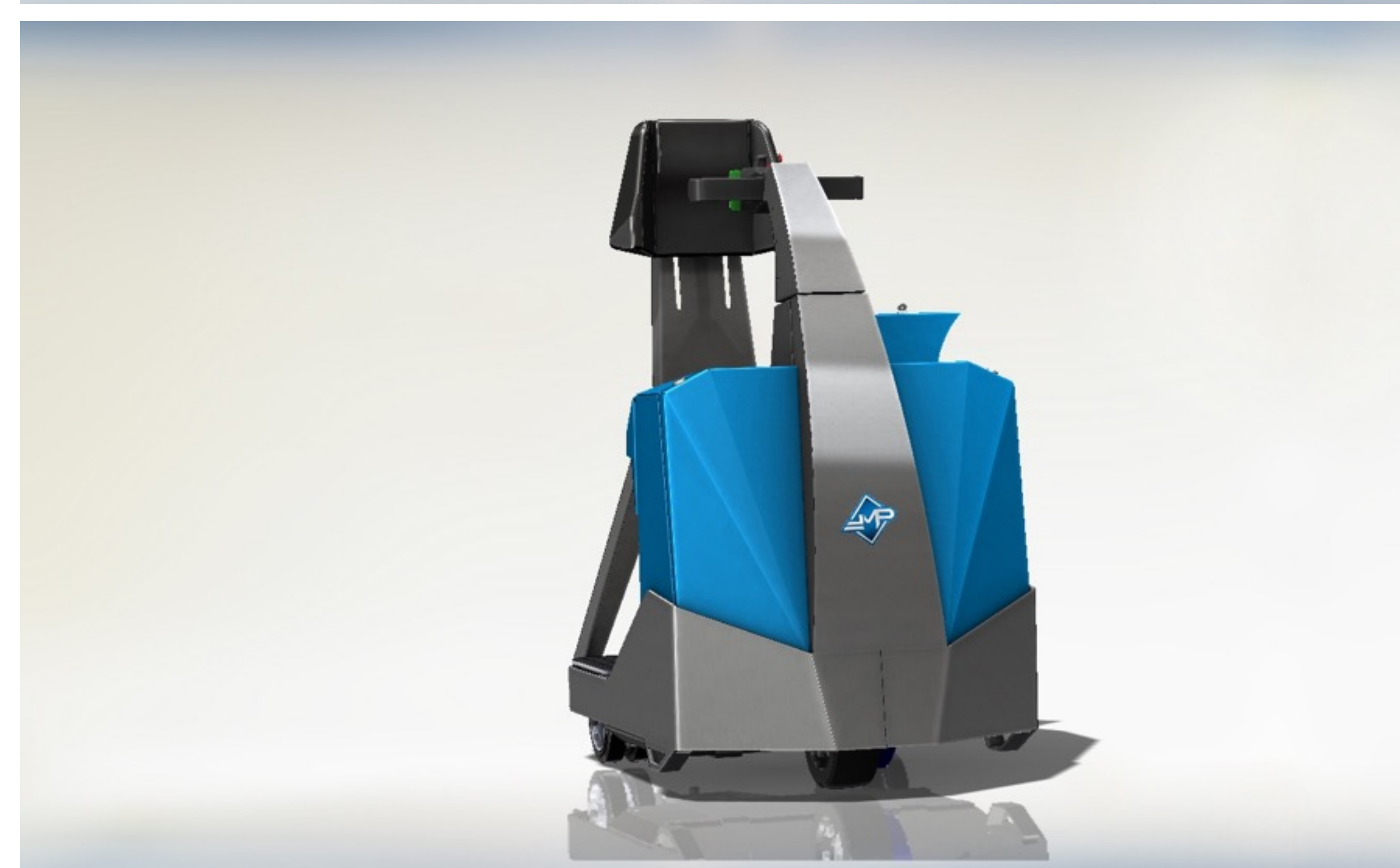
ELECTRIC TRACTOR TX2000 AC

■ ELECRC TRACTOR TX2000AC:

MP INTRALOGISTIC Series **TX2000 AC** is proposed to the market for a towing capacity of 2000 Kgs. Compact and solid for heavy uses in large industrial spaces. Fast, safe and fully ergonomic types, able to assure to the user an increase in productivity and efficiency

■ STANDARD EQUIPMENT:

- Driver standing on board
- Metallic front cover, standard blue color
- Front driving gear wheel with Vulkolan rubber wheel
- Rear wheels, Ø 200 mm superelastic and puncture-proof type
- Panel board complete with battery charge indicator display, forward and backward, speed throttle, electric horn, backward warning buzzer, emergency push button, light switch (option)
- Electronic control unit 240Ah AC
- Service brake by releasing the throttle
- Emergency brake by acting the emergency push throttle
- Parking brake by releasing the driver detection sensor
- Driver detection sensor
- Front traction driving gear
- Towing hook



TX2000 AC

COD. 010.024.0005

REDUCTION GEAR

SPEED

GRADIENT

1:22

da 6 a 10 Km/h *

10% (Std)

ELECTRIC MOTOR:

2300W AC

TOWING CAPACITY:

2000 Kg

* speed is adjustable and can be set before delivery



ELECTRIC TRACTOR TX2000 AC

BATTERY

COD. 050.002.0031

- No. 1 Traction lead/acid battery 24V – 375Ah
- Dimensions: 620 x 285 x H635 mm
- Working charge TX1500 AC: 62 Km at 10 km/h speed
- With automatic refilling system

COD. 050.003.0031

- External automatic battery charger 24V - 70Ah

* Hypotetical data considering an average consumption with the machine in perfect conditions. on a flat surface and without obstacles.

ACCESSORIES

COD. 020.008.0009

- Orange LED flashing light on backrest

ACCESSORIES PAG. 32

HOOKS PAG. 35

TROLLEYS PAG. 37



ELECTRIC PLATFORM P250L

■ ELECTRIC PLATFORM P250L

MP INTRALOGISTIC Series **P250L** is the modern and versatile vehicle/platform suitable for goods transport and for picking. The large loading platform allows the loading on board of many different items and makes the unit a fast and safe vehicle, right to increase the Company's productivity and efficiency

■ STANDARD EQUIPMENT:

- Driver standing or seated on board
- Metallic front cover, standard blue color
- Front and rear wheels, superelastic, no-tracking and puncture- proof type
- Panel board complete with battery charge indicator display, forward and backward speed push button, electric horn, backward warning buzzer, emergency push button, lights switch
- Electronic control unit
- Service brake by releasing the manipulator
- Emergency brake by acting the hand-lever on the left manipulator
- Parking brake by releasing the driver detection sensor
- Driver detection sensor
- Transaxle differential gear
- Rear traction



REDUCTION GEAR	SPEED	GRADIENT
1:16	6,5 Km/h	8% (Std)
1:22 (option)	4,7 Km/h	

P250L

COD. 010.007.0006



- Standing driver
- Platform available mm 1360 x 800, driver included

ELECTRIC MOTOR:

800W dc

TOWING CHARGE:

400 Kg

P250L SEATED

COD. 010.007.0005



- Seated driver
- Platform available mm 750 x 800

ELECTRIC MOTOR:

800W dc

TOWING CHARGE:

400 Kg



ELECTRIC PLATFORM

P250L

STANDARD BATTERY

COD. 050.002.0026

- n.2 Hermetic sealed batteries 12v - 75Ah
- Dim. mm 259x168x208(h) - Maintenance free
- Working charge: 24 Km*

COD. 050.003.0005

- In-built automatic battery charger 24V - 5 Ah HF

"TRACTION" BATTERY

Only for "SEATED" version

COD. 050.002.0033

- No. 1 Traction lead/acid battery 24v - 120Ah
- Dimensions mm 580 x 210 x 370(h)
- Working charge: 39 Km with standard reduction gear*
- With automatic refilling system

COD. 050.003.0003

- External automatic battery charger 24V - 25Ah

COD. 050.003.0006

- In-built automatic battery charger 24V - 14Ah HF

* Hypotetical data considering an average consumption with the machine in perfect conditions. on a flat surface and without obstacles.

QUICK BATTERY CHANGE

Only for "SEATED" version

COD. 040.010.0130

- Side opening battery compartment

COD. 020.013.0001

- Battery ball sliding support

COD. 020.012.0002

- Loading table for replacing battery

ACCESSORIES

COD. 020.010.0003

- "U" shape backrest

COD. 020.003.0005

- Book holder

COD. 040.020.0004

- Front steering wheel dumper

COD. 020.008.0008

- n. 2 orange LED flashing lights lit

COD. 020.020.0001

- n. 2 LED headlights set

ACCESSORIES PAG. 32

HOOKS PAG. 35

TROLLEYS PAG. 37



ELECTRIC PLATFORM P300L

■ ELECTRIC PLATFORM P300L

P300L MP INTRALOGISTIC is a strong and modern electric platform studied to meet companies requirements for intense daily pickings. The loading platform is elevated and it's separated from driving position: this ensures the operator and also the goods transport.

■ STANDARD EQUIPMENT:

- Driver seated on board
- Metallic front cover, standard blue color
- Front and rear wheels, superelastic, no-tracking and puncture- proof type
- Panel board complete with battery charge indicator display, forward and backward speed push button, electric horn, backward warning buzzer, emergency push button, lights switch
- Electronic control unit
- Service brake by releasing the manipulator
- Emergency brake by acting the hand-lever on the left manipulator
- Parking brake by releasing the driver detection sensor
- Driver detection sensor
- Transaxle differential gear
- Rear traction



P300L

Platform available: mm 1250 x 800

COD. 010.009.0002

REDUCTION GEAR

SPEED

GRADIENT

1:16

8,5 Km/h

6% (Std)

1:22 (option)

6 Km/h

ELECTRIC MOTOR:

800W

TOWING CHARGE:

400 Kg





ELECTRIC PLATFORM

P300L

STANDARD BATTERY

COD. 050.002.0026

- n.2 Hermetic sealed batteries 12v - 75Ah
- Dim. mm 259x168x208(h) - Maintenance free
- Working charge: 24 Km with standard reduction*

COD. 050.003.0005

- In-built automatic battery charger 24V - 5 Ah HF

DOUBLE BATTERY

COD. 050.002.0026

- n.4 Hermetic sealed batteries 12v - 75Ah
- Dim. mm 259x168x208(h) - Maintenance free
- Working charge: 24 Km with standard reduction*

COD. 050.003.0004

- In-built automatic battery charger 24V - 10 Ah HF

* Hypotetical data considering an average consumption with the machine in perfect conditions. on a flat surface and without obstacles.

ACCESSORIES

COD. 020.003.0005

- Book holder

COD. 020.002.0027

- Towing hook

COD. 040.020.0004

- Front steering wheel dumper

COD. 020.008.0008

- n. 2 orange LED flashing lights lit

COD. 020.020.0001

- n. 2 LED headlights set

ACCESSORIES PAG. 32

HOOKS PAG. 35

TROLLEYS PAG. 37



ELECTRIC PLATFORM PX500

PIANALE PX500

El. platform **PX500 MP INTRALOGISTIC** is a compact vehicle, with an available platform (1800x800 mm) for moving in narrow spaces, which allows every kind of transport in safe. Suitable for indoor or outdoor use, with flat industrial or with little irregular asphalt surfaces.

STANDARD EQUIPMENT:

- Driver standing on board
- Metallic front cover, standard blue color
- Nr. 1 x Front wheel, puncture-proof, no-marking, superelastic type
- Nr. 2 x Rear wheels, puncture-proof, no-marking, superelastic type
- Panel board complete with: charge indicator display and timer, forward and backward speed switch, electric horn, backward warning buzzer, emergency push button
- Electronic control unit, energy saving
- Service brake by releasing the manipulator
- Emergency brake by acting the lever on the left side of the steering handle
- Automatic parking brake by releasing the detection sensor
- Driver detection sensor
- Transaxle differential gear
- Built-in battery charger 24V
- Cushioned front fork



PX500

Platform available: mm 1400 x 800 (without backrest)

COD. 010.029.0001

REDUCTION GEAR

SPEED

GRADIENT

1:16

9 Km/h

10% (Std)

1:22 (option)

9 Km/h

ELECTRIC MOTOR:

1200W

TOWING CHARGE:

400 Kg



BATTERY

COD. 050.002.0040

- n.2 Hermetic sealed batteries 12v - 100Ah, maintenance free
- Dimensions mm 308 x 172 x 212(h)
- Working charge: 35 Km*

* Hypotetical data considering an average consumption with the machine in perfect conditions. on a flat surface and without obstacles.

ACCESSORIES

COD. 020.004.0003

- "U" shape backrest

COD. 020.020.0001

- n. 2 LED headlights set

COD. 020.008.0008

- n. 2 orange LED flashing lights lit

COD. 020.003.0005

- Book holder

COD. 020.002.0027

- Towing hook

ACCESSORIES PAG. 32

HOOKS PAG. 35

TROLLEYS PAG. 37



ELECTRIC PLATFORM P500

PIANALE P500

MP INTRALOGISTIC Series **P500** is the modern and versatile vehicle/platform suitable for goods transport and for picking. The large loading platform allows the loading on board of many different items and makes the unit a fast and safe vehicle, right to increase the Company's productivity and efficiency

STANDARD EQUIPMENT:

- Driver standing or seated on board
- Metallic front cover, standard blue color
- Front and rear wheels, superelastic, no-tracking and puncture-proof type
- Panel board complete with battery charge indicator display, forward and backward speed push button, electric horn, backward warning buzzer, emergency push button, lights switch
- Electronic control unit
- Service brake by releasing the manipulator
- Emergency brake by acting the hand-lever on the left manipulator
- Parking brake by releasing the driver detection sensor
- Driver detection sensor
- Transaxle differential gear
- Rear traction



P500

COD. 010.015.0010

Platform dimensions: mm 1600 x 850 driver included

REDUCTION GEAR	SPEED	GRADIENT
1:16	7 Km/h	12% (Std)
1:22 (option)	5 Km/h	
ELECTRIC MOTOR:	1200W	TOWING CHARGE: 400 Kg



P500 SEATED

COD. 010.015.0015

Platform available: mm 1200 x 850

REDUCTION GEAR	SPEED	GRADIENT
1:16	7 Km/h	12% (Std)
1:22 (option)	5 Km/h	
ELECTRIC MOTOR:	1200W	TOWING CHARGE: 400 Kg





ELECTRIC PLATFORM

P500

STANDARD BATTERY

COD. 050.002.0033

- No. 1 Traction lead/acid battery 24v - 120Ah
- Dimensions mm 580 x 210 x 370(h)
- Working charge: 23 Km*
- With automatic refilling system

COD. 050.003.0003

- External automatic battery charger 24V - 25Ah

COD. 050.003.0006

- In-built automatic battery charger 24V - 14Ah

* Hypotetical data considering an average consumption with the machine in perfect conditions. on a flat surface and without obstacles.

QUICK BATTERY CHANGE

COD. 040.010.0130

- Side opening battery compartment

COD. 020.013.0001

- Battery ball sliding support

COD. 020.012.0002

- Loading table for replacing battery

ACCESSORIES

COD. 020.005.0006

- Front wheel guard

COD. 020.010.0003

- "U" shape backrest **Not available for "seated" version**

COD. 020.003.0002

- Book holder

COD. 020.002.0003

- Towing hook

COD. 040.020.0006

- Front steering wheel dumper

COD. 020.020.0002

- n. 2 LED headlights set

ACCESSORIES PAG. 32

HOOKS PAG. 35

TROLLEYS PAG. 37



SCOOTER S100

■ SCOOTER S100:

MP INTRALOGISTIC Scooter **S100** is an electric vehicle studied to let the operators to move along industrial surfaces effortless, fast and safe. That grants a sensible Company's improvement in production and efficiency.

■ STANDARD EQUIPMENT:

- Driver standing on board
- Front cover made of steel plate, blue color
- Nr. 1 x Front wheel, puncture-proof, no-marking, superelastic type
- Nr. 2 x Rear wheels, puncture-proof, no-marking, superelastic type
- Panel board complete with: charge indicator display and timer, forward and backward speed switch, electric horn, backward warning buzzer, emergency push button.
- Electronic control unit, energy saving
- Service brake by releasing the manipulator
- Emergency brake by acting the lever on the left side of the steering handle
- Automatic parking brake by releasing the detection sensor
- Driver detection sensor
- Two electric motors 200W each, belt transmission
- Rear wheel drive
- Built-in battery charger 24V



S100

COD. 010.001.0003

ELECTRIC MOTOR:

2 x 200W

SPEED:

10 Km/h

COD. 010.001.0004

LARGER BATTERY
COMPARTMENT

ELECTRIC MOTOR:

2 x 200W

SPEED:

10 Km/h

STANDARD BATTERY

COD. 050.002.0016

- n.2 Hermetic sealed batteries 12v - 38Ah, maintenance free
- Dimensions: mm 190 x 160 x H170 - Working charge: 23 Km*

SUPER BATTERY

Only for larger battery compartment

COD. 050.002.0026

- n.2 Hermetic sealed batteries 12v - 75Ah, maintenance free
- Dimensions: mm 259 x 168 x H208(h) - Working charge: 46 Km*

* Hypotetical data considering an average consumption with the machine in perfect conditions. on a flat surface and without obstacles.

ACCESSORIES

COD. 020.005.0003

- Front wheel guard

COD. 020.004.0003

- Seat type E

COD. 020.004.0002

- Seat on tubular frame

COD. 020.004.0005

- Seat "EVO"

COD. 020.003.0005

- Book holder

COD. 020.002.0027

- Towing hook

COD. 040.020.0003

- Front steering wheel dumper

COD. 020.020.0001

- n. 2 LED headlights set

ACCESSORIES PAG. 32

HOOKS PAG. 35

TROLLEYS PAG. 37



SCOOTER S200

■ SCOOTER S200:

MP INTRALOGISTIC scooter **S200** is an electric vehicle studied to let the operators to move along industrial surfaces effortless, fast and safe. That grants a sensible Company's improvement in production and efficiency

■ STANDARD EQUIPMENT:

- Driver standing on board
- Front cover made of steel plate, blue color
- Nr. 1 x Front wheel, puncture-proof, no-marking, superelastic type
- Nr. 2 x Rear wheels, puncture-proof, no-marking, superelastic type
- Panel board complete with: charge indicator display and timer, forward and backward speed switch, electric horn, backward warning buzzer, emergency push button
- Electronic control unit, energy saving
- Service brake by releasing the manipulator
- Automatic parking brake by releasing the detection sensor
- Driver detection sensor
- Transaxle differential gear
- Built-in battery charger 24V



REDUCTION GEAR	SPEED	GRADIENT
1:11 (option)	12 Km/h	
1:16	7 Km/h	8% (Std)
1:22 (option)	6 Km/h	

S200

COD. 010.002.0007

ELECTRIC MOTOR:

300W

TOWING CAPACITY:

150 Kg.*

COD. 010.002.0008

ELECTRIC MOTOR:

500W

TOWING CAPACITY:

300 Kg.*

* with towing hook

BATTERY

COD. 050.002.0026

- n.2 Hermetic sealed batteries 12v - 75Ah, maintenance free
- Dimensions: mm 259 x 168 x H208 - Working charge: 60 Km*

* Hypotetical data considering an average consumption with the machine in perfect conditions. on a flat surface and without obstacles.

ACCESSORIES

COD. 020.004.0003

- Seat type E

COD. 020.004.0002

- Seat on tubular frame

COD. 020.004.0005

- Seat "EVO"

COD. 020.010.0008

- "U" shape backrest

COD. 020.003.0005

- Book holder

COD. 020.002.0027

- Towing hook

COD. 040.020.0004

- Front steering wheel dumper

COD. 020.020.0001

- n. 2 LED headlights set

ACCESSORIES PAG. 32

HOOKS PAG. 35

TROLLEYS PAG. 37



HOSPITAL H300

■ HOSPITAL H300

MP INTRALOGISTIC bedmovers are required hospital vehicles for the comfortable transport of beds and stretchers with or without patients.

MP Intralogistic bedmovers operate on gradient and guarantee a sensible increase on safety and efficiency.

■ STANDARD EQUIPMENT:

- Metallic front cover. White RAL 7035 standard color
- Nr 1 Front wheel, puncture-proof, no-marking, superelastic type
- Nr 2 rear wheel, puncture-proof, no-marking, superelastic type
- Panel board complete with battery charge indicator display and hour counter, forward and backward speed button, electric horn, backward warning buzzer, emergency push button
- Electronic control unit with energy saving
- Locking system: rack and pair of locking hooks driven by electromechanical actuators and controlled by the operator's push buttons unit
- Service brake by releasing the manipulator
- Driver detection sensor on the manipulator
- Built-in battery charger 24V



H300

COD. 010.010.0005

REDUCTION GEAR

SPEED

GRADIENT

1:34

4,5 Km/h

5%

ELECTRIC MOTOR:

350W DC

TOWING CAPACITY:

250 Kg



HOSPITAL H300

BATTERIA

COD. 050.002.0030

- n. 2 Traction sealed lead/acid battery 12v - 55Ah
- Hermetic, maintenance free
- Dimensions 221 x 138 x 228(h) mm.
- Working charge: 18 Km*

* Hypotetical data considering an average consumption with the machine in perfect conditions. on a flat surface and without obstacles.

ACCESSORIES: BED LOCKING SYSTEM

COD. 020.009.0032

- Standard rack - New Type

COD. 030.010.0013

- Coupling hook D. 20

COD. 030.010.0010

- Coupling hook D. 30

COD. 030.010.0006

- Coupling hook D. 40

COD. 030.010.0011

- Coupling hook D. 50

COD. 030.010.0012

- Coupling hook D. 60

COD. 030.010.0007

- Coupling hook D. 80

COD. 030.010.0032

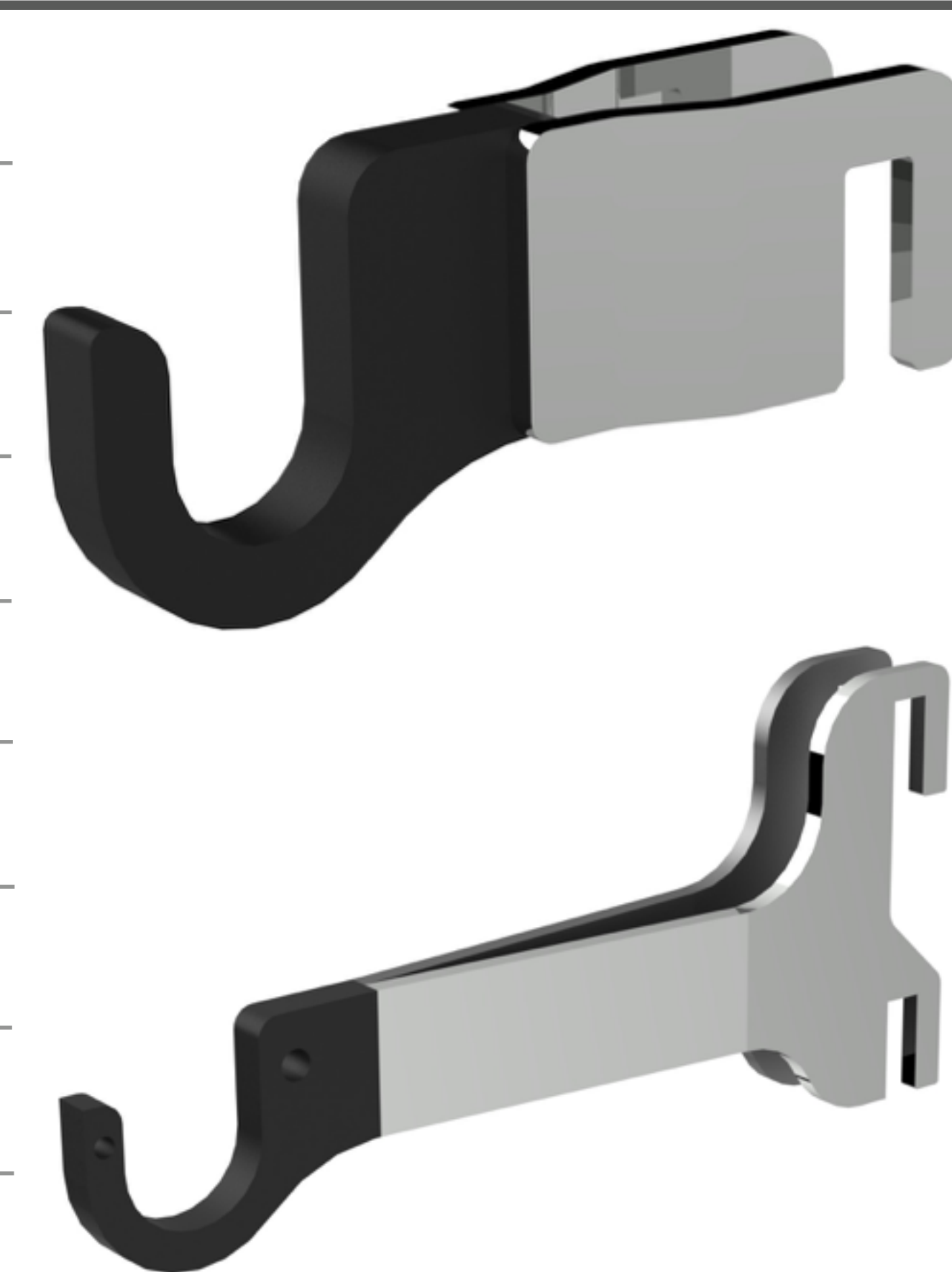
- Coupling hook D. 50 L. 380 mm.

COD. 020.002.0020

- n. 2 Coupling hook D. 20

COD. 020.002.0021

- n. 2 Coupling hook D. 30x60



ACCESSORIES PAG. 32

HOOKS PAG. 35

TROLLEYS PAG. 37



HOSPITAL H351 - H360

■ HOSPITAL H351 - H360

MP INTRALOGISTIC bedmovers are required hospital vehicles for the comfortable transport of beds and stretchers with or without patients.

MP Intralogistic bedmovers operate on gradient and guarantee a sensible increase on safety and efficiency.

■ STANDARD EQUIPMENT:

- Driver seat on board, with adjustable seat in height and length
- Metallic front cover. White RAL 7035 standard color
- Nr 1 Front wheel, puncture-proof, no-marking, superelastic type
- Nr 2 rear wheel, puncture-proof, no-marking, superelastic type
- Panel board complete with battery charge indicator display and hour counter, forward and backward speed button, electric horn, backward warning buzzer, emergency push button
- Electronic control unit with energy saving
- Locking system: rack and pair of locking hooks driven by electromechanical actuators and controlled by the operator's push buttons unit

- Service brake by releasing the manipulator
- Emergency brake by acting the lever on the left side of the steering handle
- Automatic parking brake by releasing the detection sensor
- Driver detection sensor
- In-built automatic battery charger

REDUCTION GEAR		SPEED	GRADIENT
1:22		6 - 12 Km/h	8 -12% (Std)
1:32	(option)	4,5 - 9 Km/h	



H351

COD. 010.010.0007

ELECTRIC MOTOR:

1200W AC



H360

COD. 010.010.0006

ELECTRIC MOTOR:

1200W AC



HOSPITAL H351 - H360

BATTERIA H351

COD. 050.002.0030

- n. 2 Traction sealed lead/acid battery 12v - 55Ah
- Hermetic, maintenance free
- Dimensions 221 x 138 x 228(h) mm. - Working charge: 10 Km*

BATTERIA H360

COD. 050.002.0026

- n. 2 Traction sealed lead/acid battery 12v - 75Ah
- Hermetic, maintenance free
- Dimensions 259 x 168 x 208(h) mm. - Working charge: 15 Km*

BATTERIA "EXTRA"

Solo per H360

COD. 050.002.0039

- n. 2 Traction sealed lead/acid battery 12v - 100Ah
- Hermetic, maintenance free
- Dimensions mm 329 x 172 x 214(h) - Working charge: 20 Km*

* Hypotetical data considering an average consumption with the machine in perfect conditions. on a flat surface and without obstacles.

ACCESSORIES: BED LOCKING SYSTEM

COD. 020.009.0032

- Standard rack - New Type

COD. 030.010.0013

- Coupling hook D. 20

COD. 030.010.0010

- Coupling hook D. 30

COD. 030.010.0006

- Coupling hook D. 40

COD. 030.010.0011

- Coupling hook D. 50

COD. 030.010.0012

- Coupling hook D. 60

COD. 030.010.0007

- Coupling hook D. 80

COD. 030.010.0032

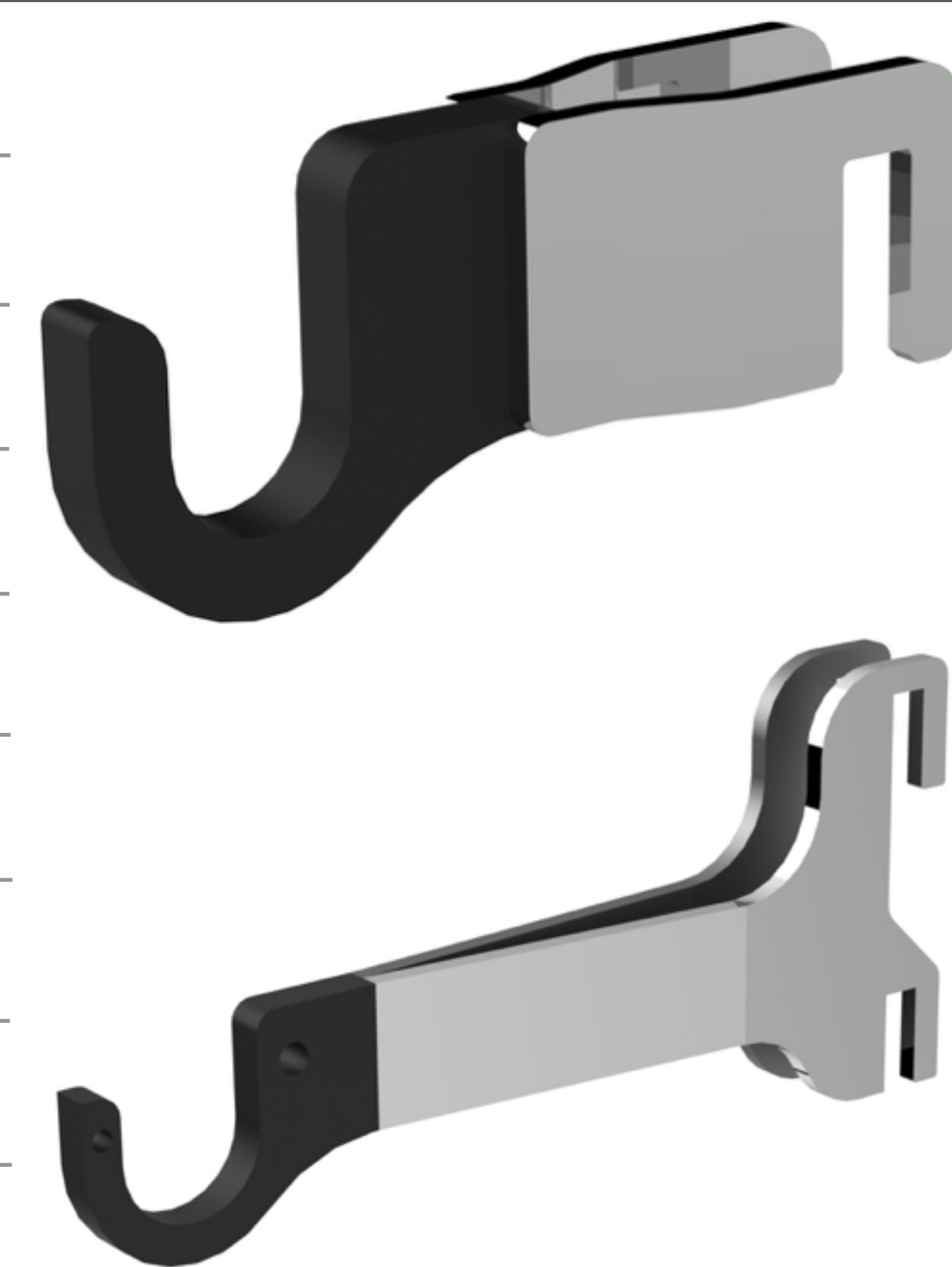
- Coupling hook D. 50 L. 380 mm.

COD. 020.002.0020

- n. 2 Coupling hook D. 20

COD. 020.002.0021

- n. 2 Coupling hook D. 30x60



ACCESSORIES

COD. 020.002.0027

- Towing hook

COD. 020.008.0003

- Special blink light

Only for H360

COD. 020.020.0001

- N. 2 LED headlights set

ACCESSORIES PAG. 32

HOOKS PAG. 35

TROLLEYS PAG. 37



ACCESSORIES

STANDARD WIRE BASKET

COD. 020.001.0001 • STANDARD WIRE BASKET - Large

COD. 020.001.0002 • STANDARD WIRE BASKET - Small

BOOK HOLDERS

COD. 020.003.0002 • Book holder (Pic.1) for T1500D-T2000D-P500

COD. 020.003.0005 • Book holder (Pic.2) for other models

COD. 020.003.0007 • Book holder for TX1000



(Pic.1)



(Pic.2)

SEATS

COD. 020.004.0002 • SEAT WITH TUBULAR FRAME (Pic.1)

COD. 020.004.0003 • SEAT MODEL "E" (Pic.2)

COD. 020.004.0005 • SEAT "EVO" (Pic.3)

COD. 020.004.0006 • BENCH For 020.010.0010



(Pic.1)



(Pic.2)



(Pic.3)

FRONT WHEEL GUARDS

COD. 020.005.0003 • FRONT WHEEL GUARD (Pic.1) for S100

COD. 020.005.0005 • FRONT WHEEL GUARD (Pic.2) for T1500D/T2000D

COD. 020.005.0006 • FRONT WHEEL GUARD (Pic.2) for P500



(PIC.1)



(PIC.2)



ACCESSORIES

FRONT LIGHTS

COD. 020.020.0001 • KIT N. 2 LED front lights for small column

COD. 020.020.0002 • KIT N. 2 LED front lights for large column



FLASHING LIGHTS

COD. 020.008.0001 • FLASHING LIGHT WITH BENDED POST FOR "S" BACKREST

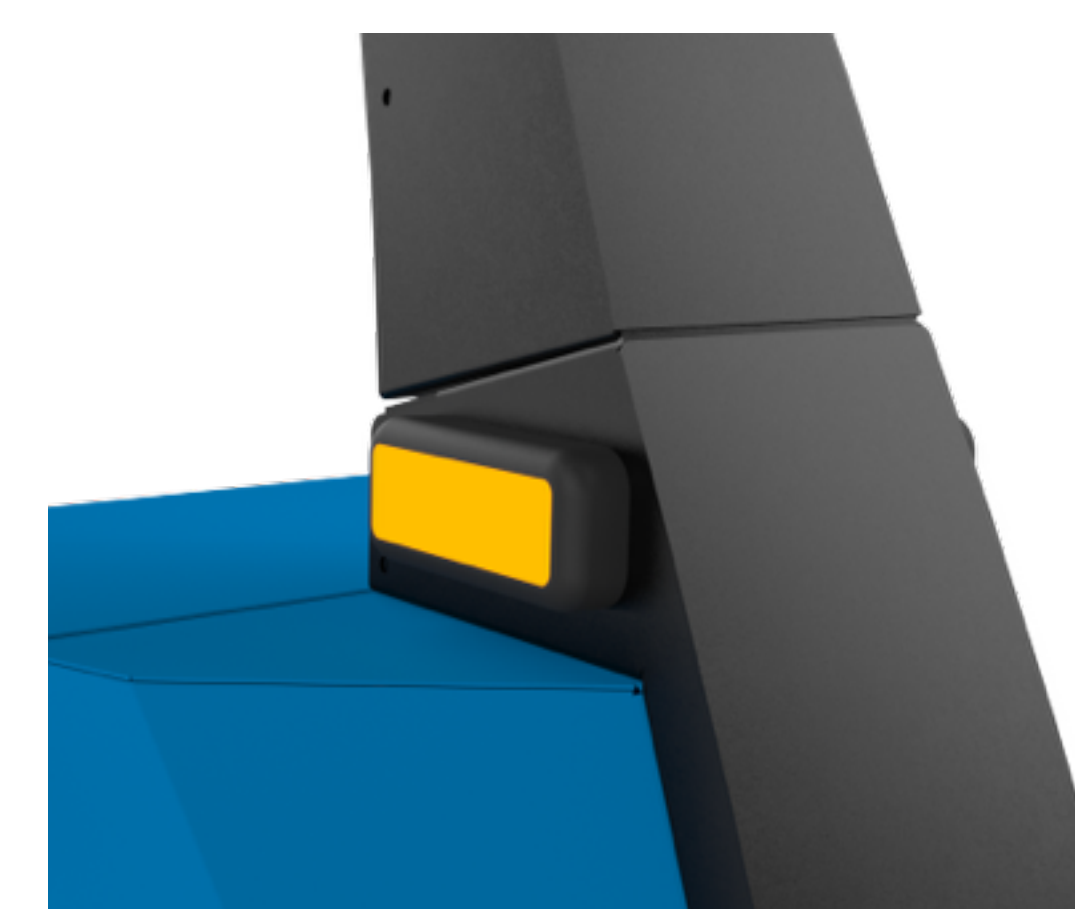
COD. 020.008.0003 • SPECIAL FLASHING LIGHT HOSPITAL

only for H360

COD. 020.008.0006 • FLASHING LIGHT WITH STRAIGHT TELESCOPIC POST

for tractors

COD. 020.008.0008 • N. 2 ORANGE LED FLASHING LIGHTS



BACKRESTS

COD. 020.010.0001 • "S" SHAPE TUBULAR BACKREST (Pic.1)

COD. 020.010.0003 • "U" SHAPE TUBULAR BACKREST (Pic.5)

for Platforms

COD. 020.010.0008 • "U" SHAPE TUBULAR BACKREST (Pic.2)

for Scooters

COD. 020.010.0009 • STANDING DRIVER BACKREST (Pic.3)

for T4000D AC

COD. 020.010.0010 • STANDING DRIVER BACKREST (Pic. 4)

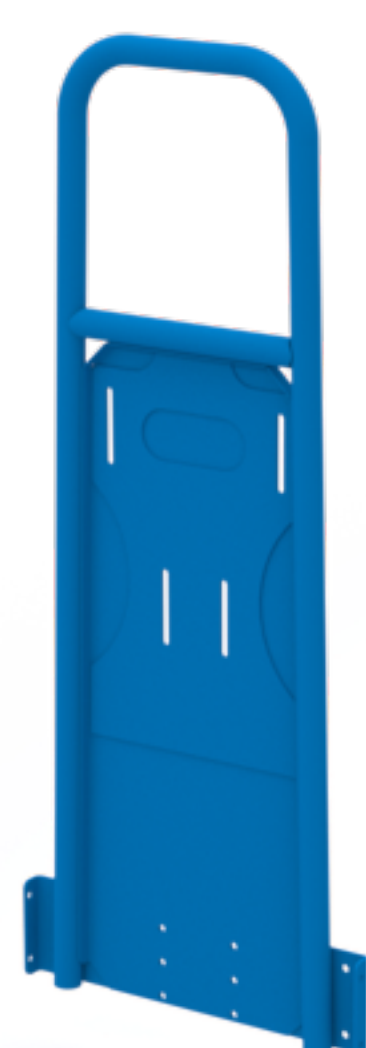
for SX500

COD. 020.010.0011 • "U" SHAPE TUBULAR BACKREST WHIT REINFORCED WHEELS GUARD (Pic.2)

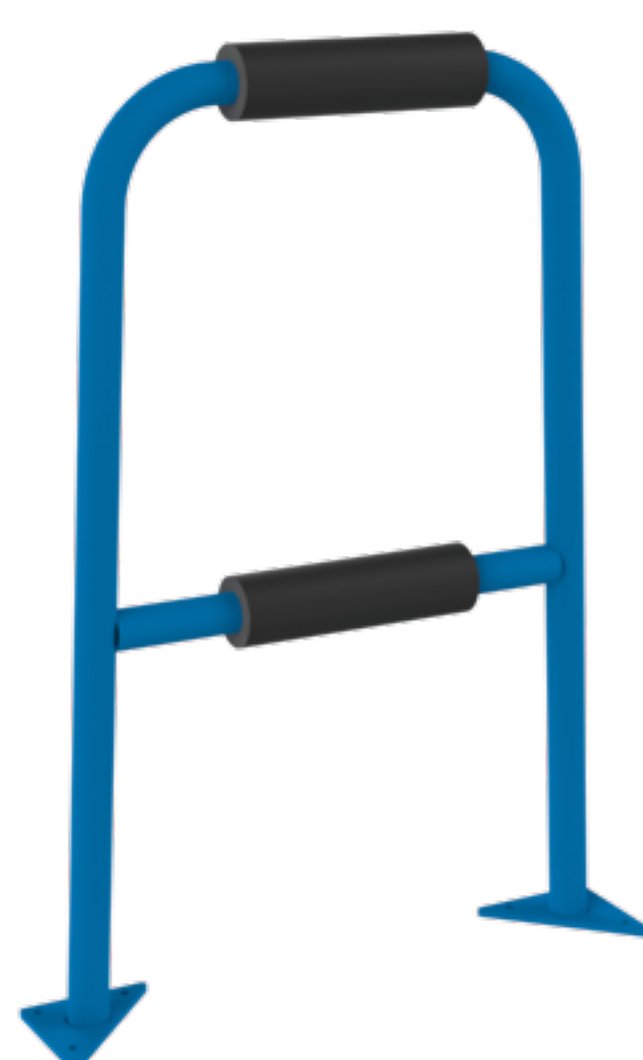
for SX500



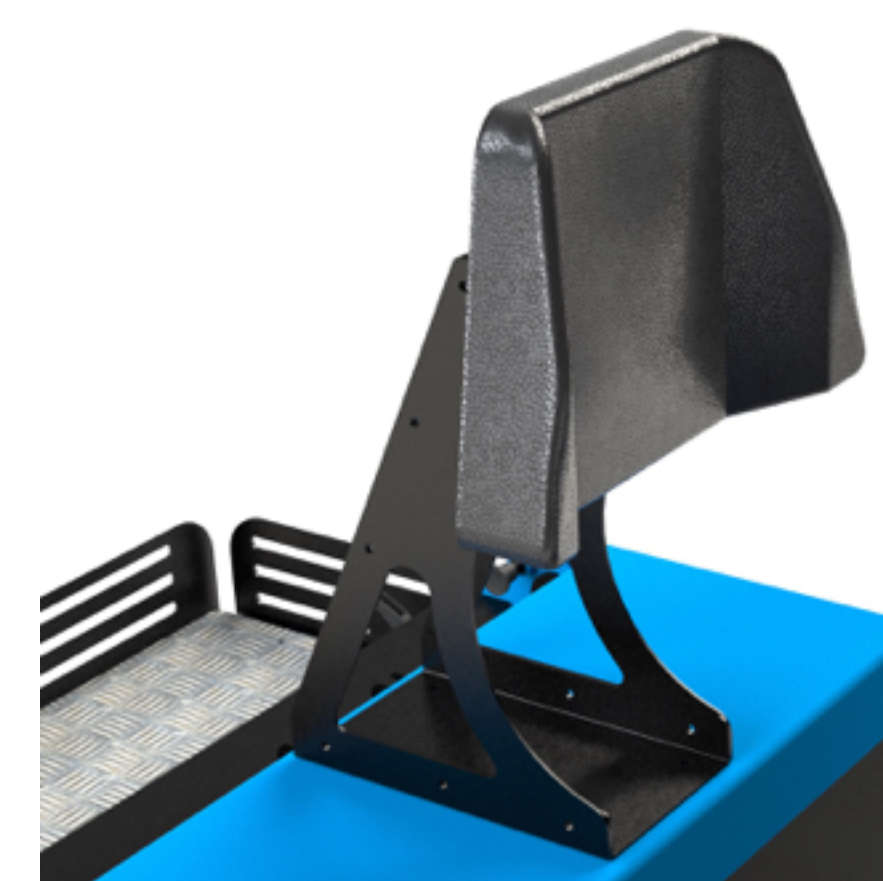
(PIC.1)



(PIC.2)



(PIC.5)



(PIC.3)



(PIC.4)



ACCESSORIES

REARVIEW MIRRORS

COD. 020.006.0001 • KIT REARVIEW MIRRORS *

* only for Scooters, H351, H360, SX500, TX1000 AC with handlebar, T1000 AC, T500 EVO, P250L e P300L

WIRE BASKET SUPPORT

only for Scooters

COD. 020.013.0006 • WIRE BASKET SUPPORT



FRONT STEERING WHEEL DUMPER

COD. 040.020.0003 • FRONT STEERING WHEEL DUMPER

for S100

COD. 040.020.0004 • FRONT STEERING WHEEL DUMPER

for S200

COD. 040.020.0006 • FRONT STEERING WHEEL DUMPER

for Tractors

COD. 040.020.0008 • FRONT STEERING WHEEL DUMPER

for P250L and P300L



QUICK BATTERY CHANGE

COD. 020.012.0002 • LOADING TABLE FOR REPLACING BATTERY

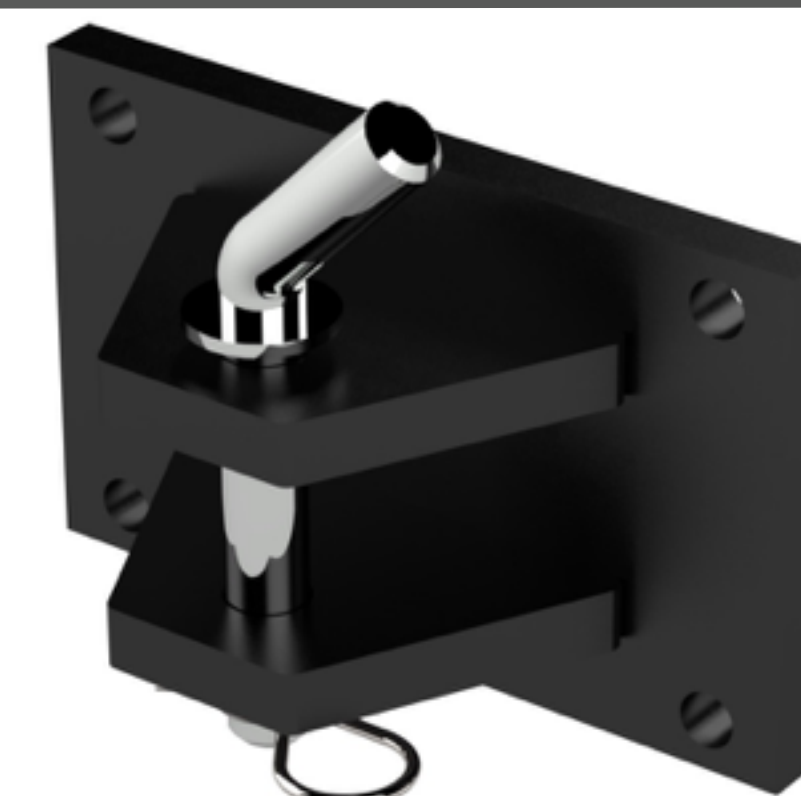




TOWING HOOKS

MANUAL TOWING HOOKS

COD. 020.002.0003 • Towing hook - 15 mm. **for P500**

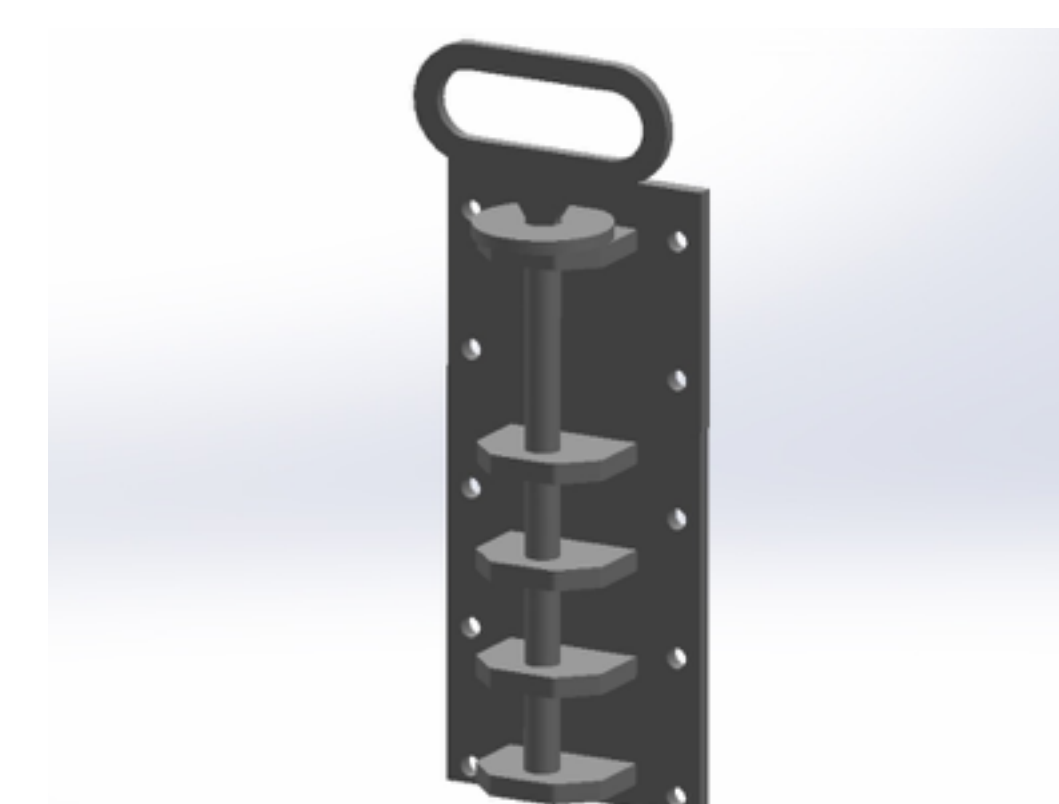


COD. 020.002.0028 • Towing hook for scooters D. 20

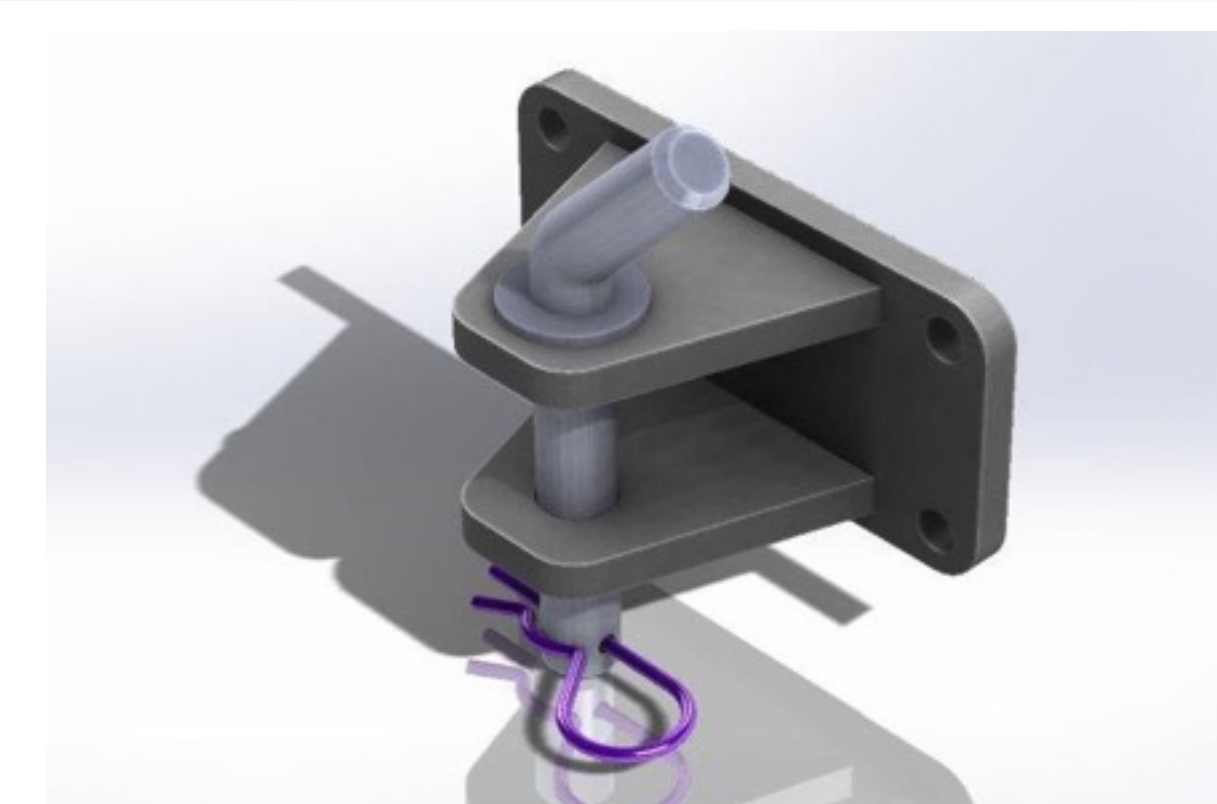
COD. 020.002.0030 • Towing hook for scooters D. 15



COD. 020.002.0015 • Multiple towing hook, seated driver
only for T1500D, T2000D



COD. 020.002.0027 • Towing hook
only for SX500, T500 and T1000



COD. 020.002.0032 • Rudder hook

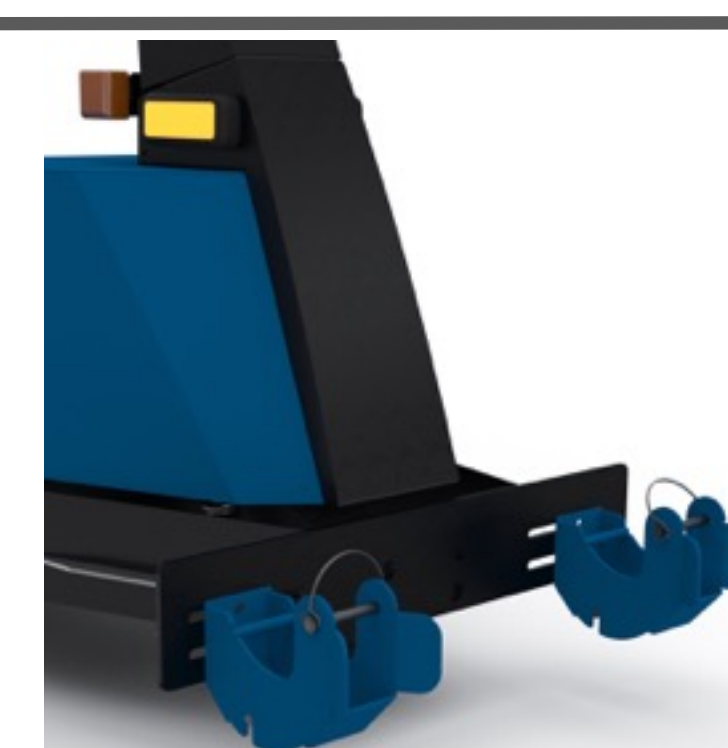


HOOKS FOR SHOPPING CARTS

only for SX500

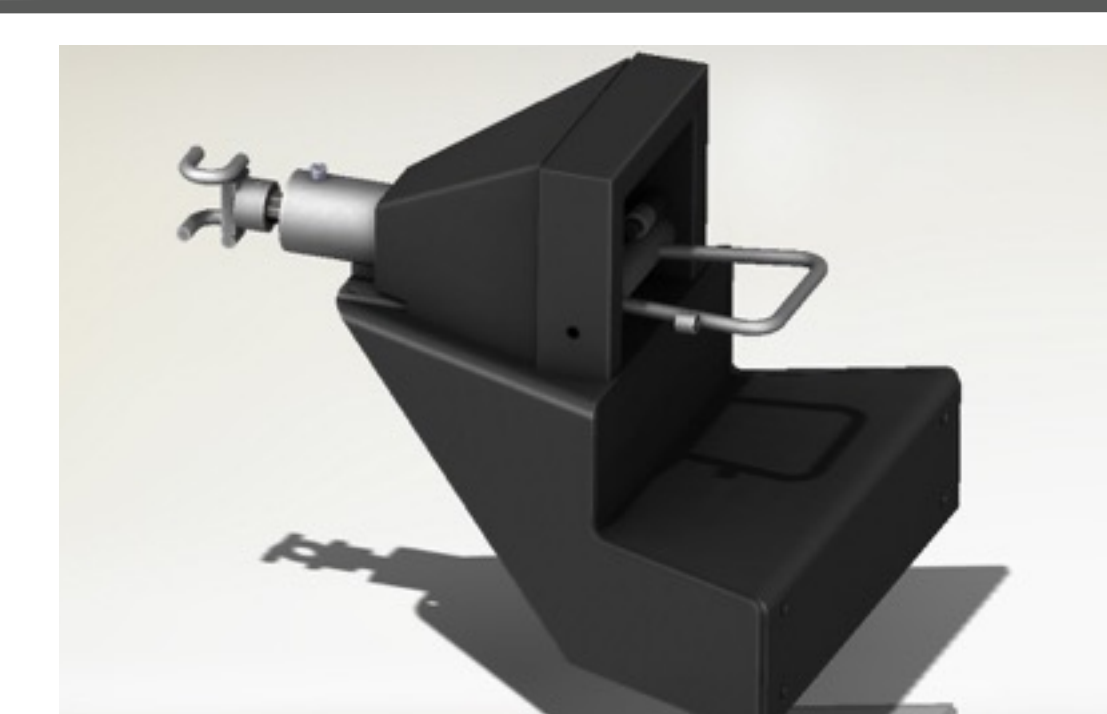
COD. 020.002.0025 • Front hook for "shopping carts"

COD. 020.002.0026 • Rear hook for "shopping carts"



AUTOMATIC TOWING HOOKS

COD. 020.002.0024 • Rotating hook with pedal dropout
only for TX1000 AC and TX2000 AC





COVERS

RAIN PROTECTING COVER

COD. 020.014.0006 • RAIN PROTECTING COVER

only for T1500D and T2000D

COD. 020.014.0008 • RAIN PROTECTING COVER

only for T4000D AC





TROLLEYS STANDARD

TROLLEY NEW 500

CODE 020.017.0016

CODE 020.017.0017 with no-tracking wheels

- Structure: Painted steel
- Wheels: front pivoting, rear fixed
- Standard wheel: standard rubber ring; hardn. 80 Shore A, coating with galvanized iron disks, Ø 200 mm.
- No-tracking wheel: no-tracking rubber ring; hardn.. 80 Shore A, coating with galvanized iron disks Ø 200 mm.
- Painting: powder coating
- Tow Shaft: with spring shaft
- Compatibility: Euro Pallet 1200x800
- Weight: 41 kg
- Reach: 500 kg



TROLLEY NEW 1000

CODE 020.017.0004

CODE 020.017.0013 with no tracking wheels

- Structure: Painted steel
- Wheels: front pivoting, rear fixed
- Standard wheel: polyurethane ring TR-ROLL; hardn. 75 Shore A, coating with cast aluminium
- No-tracking wheel: no-tracking rubber ring; hardn. 80 Shore A, coating with galvanized iron disks Ø 200 mm.
- Painting: powder coating
- Tow Shaft: with spring shaft
- Compatibility: Euro Pallet 1200x800
- Weight: 41 kg
- Reach: 1000 kg



WITH PUSHING HANDLE

CODE 020.018.0001

- Structure: Painted steel
- Manual handle
- Tow Shaft: with repositioning by spring
- Compatibility: Euro Pallet 1200x800 – 1200x 1000



CASES HOLDER

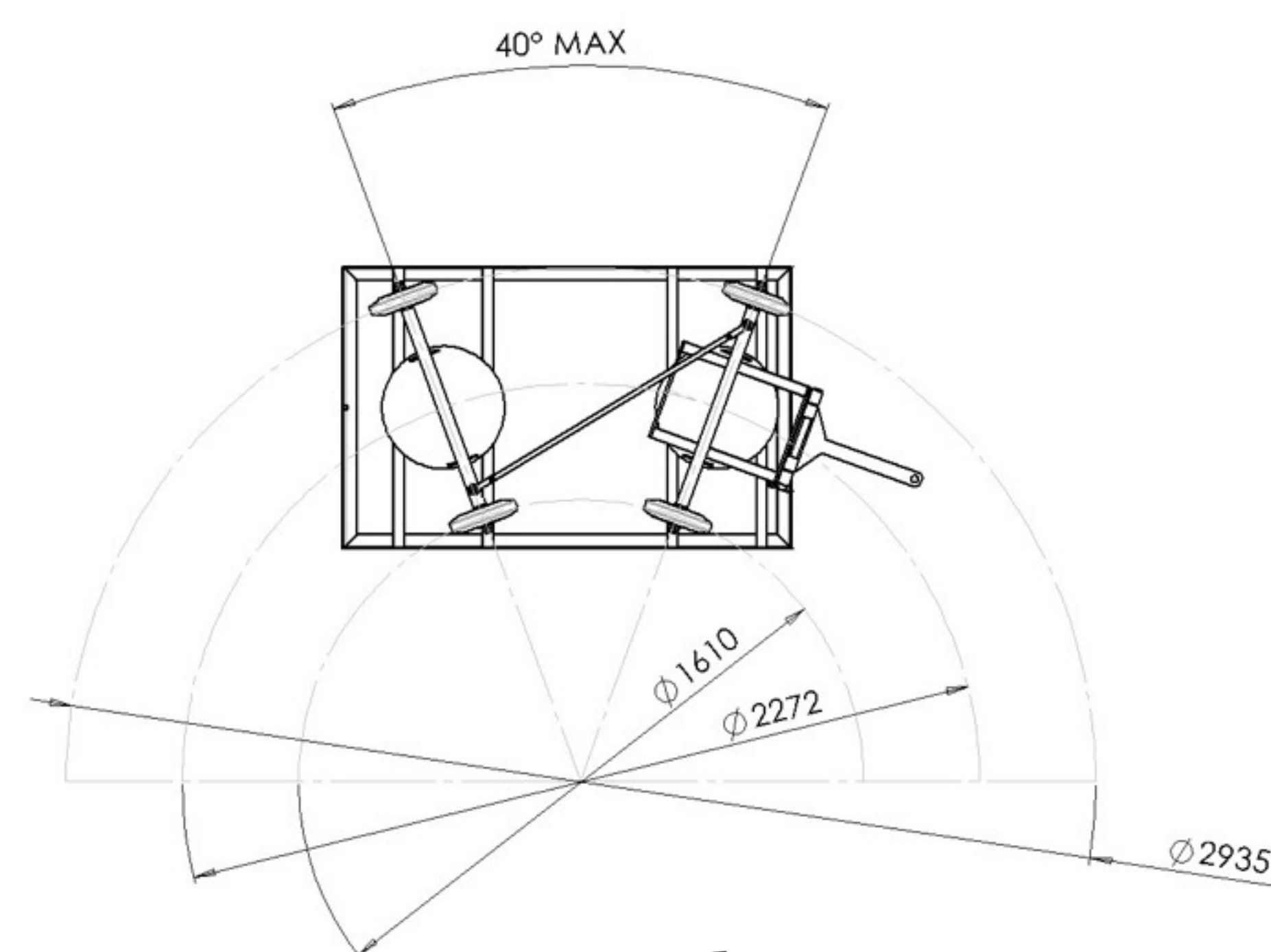
CODE 020.018.0002

- Dimensions: 600x400xH140
- Structure: Galvanized steel
- Wheels: front pivoting, rear fixed
- Wheel diameter: 100 mm.
- Compatibility: UT-PAL VDA KLT
- Max speed: 6km/h
- Max load height: 840mm
- Weight: 5,0 kg
- Reach: 250 kg





TROLLEYS ASSISTED DRIVE WITH SPRING SHAFT



TROLLEY NEW 1000 V.C.

CODE 020.017.0014

- Structure: Painted steel
- Wheel: front pivoting, rear fixed
- Wheel type: ring with coating "Sigma Elastic"; hardn. 70 Shore A, alluminium core, Ø 200 mm.
- Painting: powder coating
- Tow Shaft: with spring shaft
- Compatibility: Euro Pallet 1205x805
- Weight: 70 kg
- Reach: 1000 kg



TROLLEY NEW 1000 V.C. NO-TRACKING

CODE 020.017.0015

- Structure: Painted steel
- Wheel: front pivoting, rear fixed
- Wheel type: ring with polyurethan coating TR-ROLL; hardn. 75 Shore A, alluminium core, Ø 200 mm.
- Painting: powder coating
- Tow Shaft: with spring shaft
- Compatibility: Euro Pallet 1205x805
- Weight: 70 kg
- Reach: 1000 kg



ACCESSORIES FOR TROLLEYS

CODE 020.019.0001

- Steel plate

CODE 020.019.0002

- Aluminium plate

CODE 020.019.0003

- Wooden plate

CODE 020.019.0010

- Frame for shelves

CODE 020.019.0011

- Steel plate shelf

CODE 020.019.0020

- Food plate protection

CODE 020.019.0021

- Angle steel for pallets container (4 pcs.)

CODE 020.019.0022

- Chock for forklift



TOLLEYS SPECIAL APPLICATIONS

ANTIFIRE

CODE 020.016.0021



TOOLS CARRIER SMALL

CODE 020.018.0003

- Dimensions: 600x400 mm.
- Six drawers 588x367 mm with ball bearing slides.
- Drawer bases protected by foamed rubber mats.
- Four castors 125 mm in Ø: 2 fixed and 2 steering (one with brake).
- Front centralized safety lock.
- Opening system throughout length of drawer.
- Static load capacity: 1200 kg.
- Thermoplastic worktop.
- Integrated side and rear bottle holders.
- Integrated paper roll holder.
- Uprights and drawer front made of aluminium.
- Need to add a small helm for docking



TOOLS CARRIER LARGE

CODE 020.018.0004

- Dimensions: 800x1200 mm.
- Ten drawers (588x367 mm) with ball bearing slides.
- Quick, safe system for opening and closing drawers, with nylon and fibreglass front
- Drawer bases protected by foamed rubber mats.
- our high-capacity castors 150 mm in Ø: 22 fixed and 2 steering (with brakes).
- 2 centralised safety locks.
- Multiply wood worktop with holes for a vice
- Side compartment with foldaway door with lock.
- 135-mm-high storage compartment with plastic-covered base.
- Static load capacity: 1200 kg.
- Need to add a large helm for docking



ACCESSORIES

CODE 020.019.0023

- Small drawbar for docking

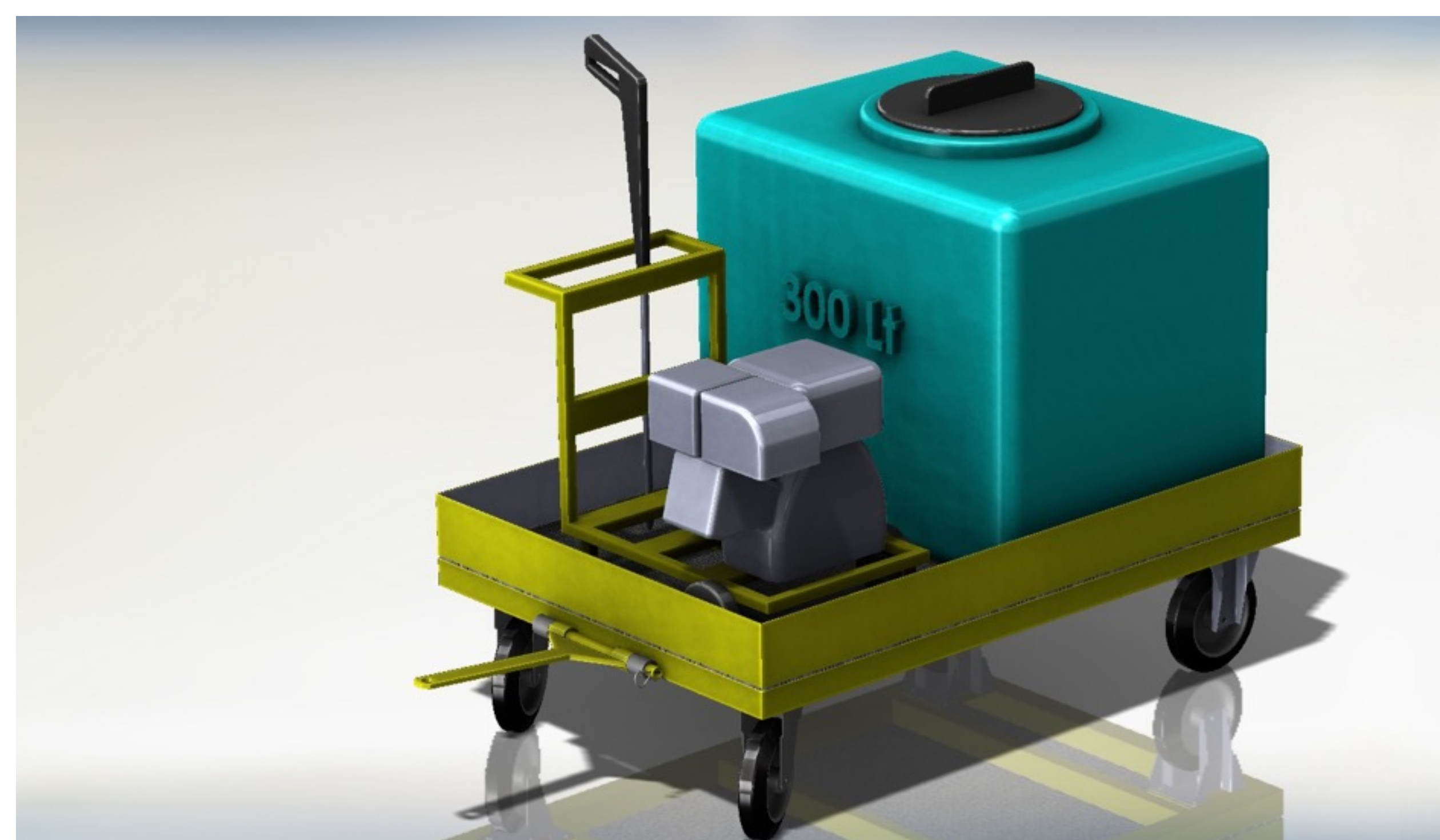
CODE 020.019.0024

- Large drawbar for docking



TROLLEYS SPECIAL APPLICATIONS

PRESSURE CLEANER



CLEANING TROLLEY



ROLL CARRIER



BARREL CARRIER





SPECIAL APPLICATIONS

AMBULANCE



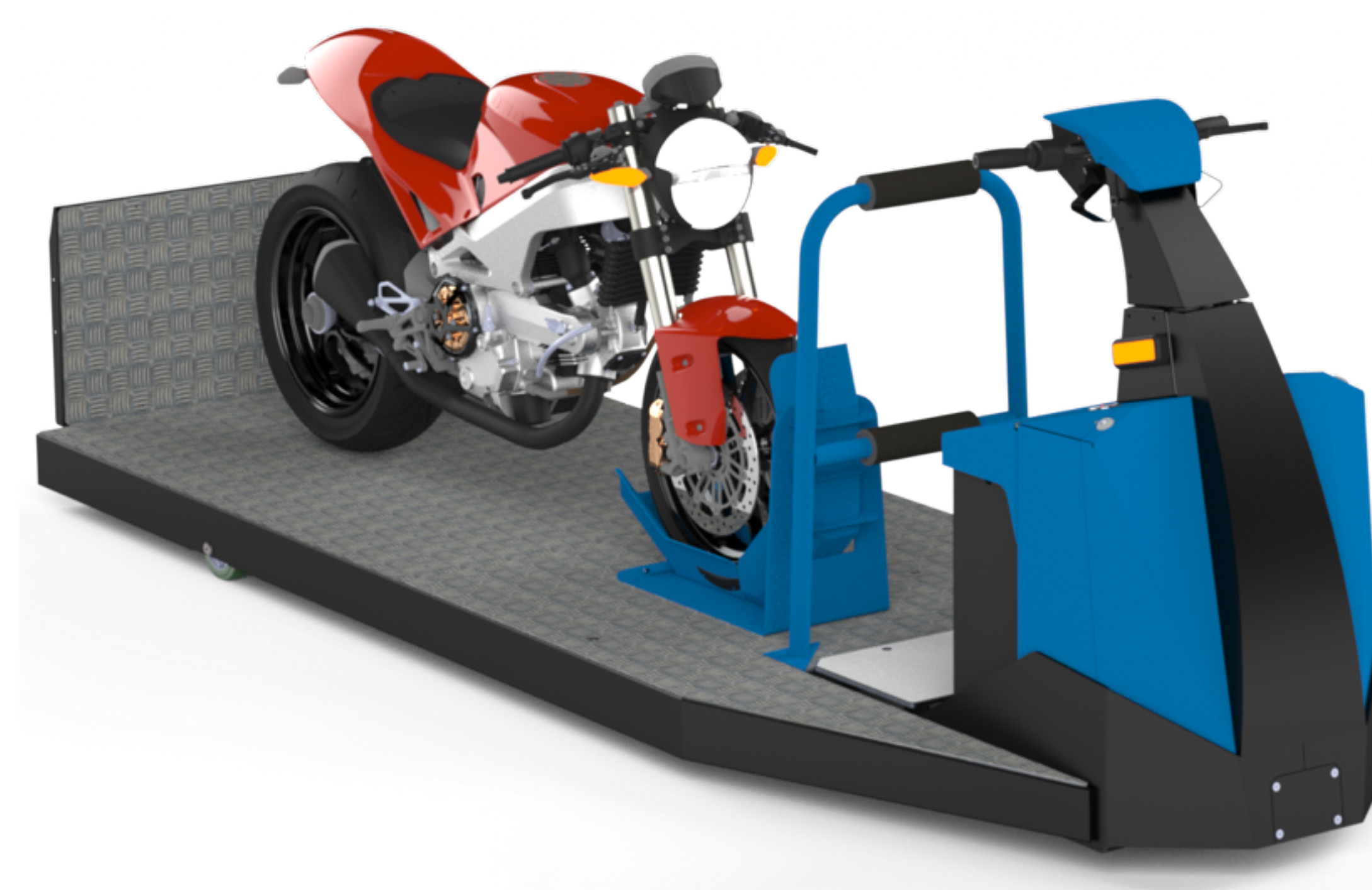
PEOPLE CARRIER



SPECIAL TOWINGS



SPECIAL CHARGING





MP INTRALOGISTIC

SECTORS

- WHITE GOODS • MECHANICS
- SUPERMARKETS • ELECTRONICS
- PLUMBING SECTOR • ELECTRICAL SUPPLIES
- MASS RETAIL CHANNEL • CLOTHING INDUSTRY
- FURNITURE WORKSHOP • AUTOMOTIVE
- MARINE • AIRPORTS
- MEDICAL • BANKS
- HOSPITAL • FOOD

MP INTRALOGISTIC
MASTER IN PRODUCTIVITY



MP INTRALOGISTIC s.r.l. Via R. Luxemburg, 24 - 42010 Rio Saliceto - (RE) - Italy

TEL: (+39) 0522.647.192

EMAIL: info@mpintralogistic.it

WEB: www.mpintralogistic.it